

## General Characteristics

Loading length x 2 (m)	12.535 x 2
Loading width (m)	2.7
Loading area (m <sup>2</sup> )	67
Loading capacity (m <sup>3</sup> )	158
Length of door openings (m)	6.117 x 4
Height of door openings (m)	2.43
Platform height (m)	1.2
Tare weight (t)	27



## Equipment

4 sliding walls per wagon side - access to complete floor area from both sides  
 Fixing points along both sides for loading security purposes

## Load limits

Payload	A	B	C	D	
S	37	45	55	63	**

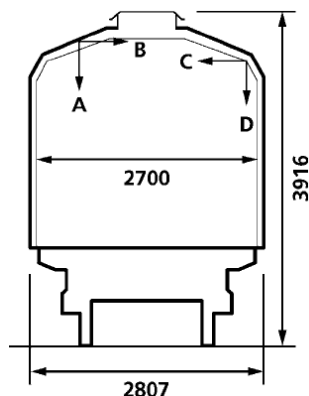
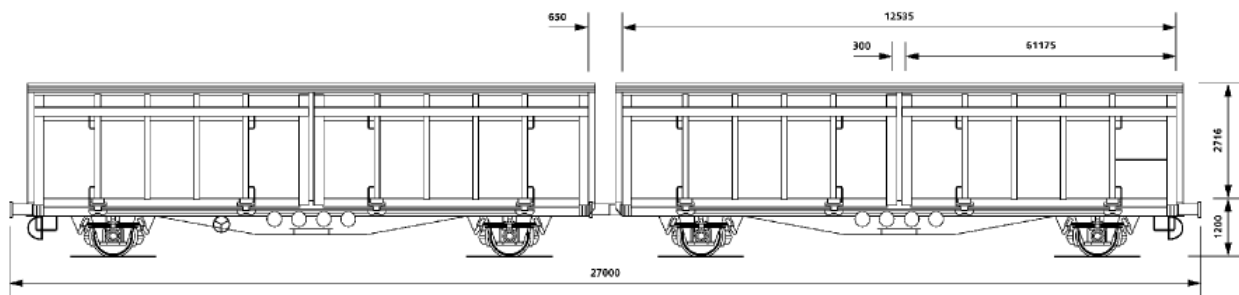
60 euro pallets (0.8m x 1.2m) / 48 industrial pallets (1m x 1.2m)

Payload (axle load 20.5t) ca. 55 tonnes

Payload (axle load 22.5t) ca. 63 tonnes

Wheel pressure on floor board 5 tonnes maximum

## Diagram : Hfirs 4



Minimum curve 75 metres  
 Maximum speed 100 kph

Measurements in wall area (A - B)	
Height above wagon floor (mm)	Loading width (mm)
4 2430	1164
2400	1329
2350	1604
2300	1878
2250	2153
3 2204	2406
2200	2413
2150	2503
2100	2592
2 2079	2629
2050	2646
2000	2676
1 1959	2700

Measurements in roof support area (C - D)	
Height above wagon floor (mm)	Loading width (mm)
4 2430	5502
2400	619
2350	872
2300	1146
2250	1421
2200	1696
2150	1970
2100	2245
2050	2520
3 2028	2642
2000	2658
2 1958	2683
1950	2683
1900	2683
1 1892	2683